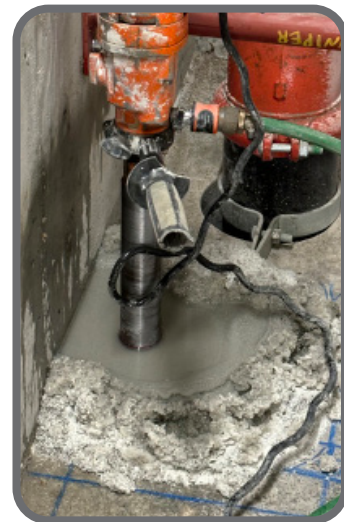


# Best DRY™

**BestDRY™ is a non-hazardous super absorbent solution used to convert concrete, stone or plaster slurry waste into a dry material that can be easily disposed of with no environmental implications.**

You can use BestDRY™ in a wide variety of applications: concrete cutting, concrete floor polishing, pool plastering, stone shops, precast and prestressed concrete, and more.



## Features & Benefits:

- Non-hazardous and environmentally friendly disposal.
- Solidifies immediately reducing process time.
- Converts wet slurry into a landfill accepted waste.
- Solidified slurry will pass the Paint Filter Liquids Test (PFLT) and the Toxicity Characteristic Leaching Procedure (TCLP) for heavy metals, allowing for compliant disposal into landfill.
- BestDRY™ effectively Traps hazardous substances like silica dust, paint pigments, high pH water or heavy metals, preventing their release back into the environment.

## Directions:

1. Add 1-2 cups of **BestDRY™** for each 5-10 gallons of slurry.
2. Mix until solidified, normally **less than 5 minute** reaction time.
3. Shovel into trash bags and deposit as normal construction waste.



☎ (888) SLURRY7 (888)758-7797  
@ info@BestSlurrySolutions.com  
🌐 BestSlurrySolutions.com  
📍 Warehouses in the USA: GA, IN, CA & MO.

